

Trends for Pike Pa Help Website

Section	Parameter	Year-2003*	2004	2004	2004	2004	2004	2004	2004	2004	2004	2004	2004	2004	2004	2005	2005	2005	2005	2005	2005
			Jan	Feb	Mar	Apr	May	Jun	Jul	Aug	Sep	Oct	Nov	Dec	Jan	Feb	Mar	Apr	May	Jun	
General	Hits	Entire Site	58,996	17,934	13,780	19,977	15,566	13,540	17,492	17,992	18,277	30,711	22,769	17,872	19,152	25,488	20,624	25,588	23,392	24,432	18,876
	Hits	Avg/Day	161	578	475	644	518	436	583	589	589	1,023	734	595	617	822	736	825	779	788	629
	Hits	Home Page	1,001	334	199	323	234	251	243	247	220	373	285	261	275	348	328	392	419	501	341
	Page Views	Page Views	16,430	5,346	3,445	5,213	4,361	3,801	6,822	5,457	7,258	11,892	10,136	8,845	9,914	10,513	7,711	9,241	9,043	12,226	8,169
	Page Views	Avg/Day	124 **	172	118	168	145	122	227	176	234	396	326	294	319	339	275	298	301	394	272
	Page Views	Avg/Unique Visitor	12	8	6	7	7	6	9	7	8	11	10	11	8	8	6	6	6	11	7
	Page Views	Document Views	5,236	1,761	1,219	1,753	1,515	1,290	1,494	1,384	1,481	2,113	1,546	1,500	1,515	1,783	1,730	2,097	2,446	2,888	1,790
	Visits	Visits	5,092	1,546	1,070	1,668	1,297	1,406	1,932	2,006	2,320	2,506	2,165	2,012	2,843	3,572	3,046	4,027	3,683	3,259	3,101
	Visits	Avg/Day	13	49	36	53	43	45	64	64	74	83	69	67	91	115	108	129	122	105	103
	Visits	Avg Visit Length	0:11	0:11	0:08	0:09	0:10	0:11	0:17	0:12	0:20	0:15	0:17	0:22	0:26:42	0:20:31	0:14:05	0:15:29	0:16:06	0:19:03	0:14:32
	Visits	Median Visit Length	0:04	0:04	0:02	0:03	0:03	0:02	0:04	0:03	0:05	0:04	0:03	0:04	0:05:16	0:03:46	0:02:37	0:03:48	0:03:39	0:05:10	0:03:55
	Visits	Visits by Search Engines	286	84	80	99	91	67	118	89	71	102	94	92	65	165	201	248	135	93	142
	Visits	Visits from Spiders	1,214	257	216	262	319	444	699	608	787	739	596	623	1,189	1,284	1,014	1,320	1,135	791	803
	Vistors	Unique Visitors	1,330	621	548	733	565	622	715	778	889	998	923	791	1,196	1,206	1,140	1,378	1,325	1,067	1,041
	Vistors	Visited Once	896	442	383	527	381	377	394	444	518	620	560	480	753	642	626	846	780	635	632
	Vistors	Visited More than Once	434	179	165	206	184	245	321	334	371	378	363	311	443	564	514	532	545	432	409
	Activity	Avg/Day Visits Weekdays	31	50	38	59	44	51	72	68	75	91	73	71	92	119	118	129	132	111	105
		Avg Hits/Day Weekdays	391	674	499	772	585	543	658	651	658	1240	878	640	645	985	840	937	900	969	718
		Avg Visits/Weekend	55	87	60	74	77	63	85	100	131	121	123	112	179	214	225	260	180	161	196
		Avg Hits/Weekend	505	620	759	554	669	424	753	731	760	854	864	946	1,076	958	1,268	1,007	895	621	768
Most Active Day		Tue	Tue	Tue	Wed	Thur	Tue	Tue	Wed	Tue	Thu	Wed	Tue	Tue	Wed	Wed	Tue	Wed	Tue	Thu	
Least Active Day		Sat	Sun	Fri	Sat	Sat	Sat	Sat	Sun	Sat	Sun	Sat	Sun	Sat	Sun	Sun	Sat	Sat	Sat	Sat	
Most active Date		8/21	1/13	2/28	3/2	4/27	5/18	6/15	7/10	8/4	9/23	10/5	11/2	12/10	1/26	2/10	3/4	4/25	5/3	6/23	
Hits on Most Active Date		2859	1232	1,399	1,723	1,332	1,661	1,714	1,413	1,408	6,152	2,046	1,589	2,151	3,405	1,598	2,014	1,738	2,137	1,449	
Least Active Date		8/1	1/17	2/7	3/6	4/17	5/15	6/12	7/17	8/15	9/4	10/3	11/25	12/26	1/2	2/18	3/27	4/30	5/14	6/19	
Hits on Least Active Date		2	102	35	67	114	38	142	123	123	257	117	140	186	184	175	210	131	237	160	
Most Active Hour		10:00	12:00	11:00	13:00	11:00	13:00	16:00	13:00	11:00	17:00	14:00	15:00	15:00	15:00	15:00	14:00	10:00	10:00	11:00	11:00
Least Active Hour		4:00	5:00	2:00	5:00	6:00	1:00	2:00	3:00	3:00	4:00	4:00	1:00	6:00	2:00	4:00	4:00	1:00	4:00	4:00	
Vistors		No. of Visits	1	67.4%	71.2%	69.9%	71.9%	67.4%	60.6%	55.1%	57.1%	58.3%	62.1%	60.7%	60.7%	63.0%	53.2%	54.9%	61.4%	58.9%	59.5%
	No. of Visits	2	10.4%	9.8%	11.5%	13.0%	15.6%	19.3%	22.9%	18.3%	19.7%	16.6%	18.6%	17.4%	19.1%	21.9%	19.2%	15.6%	18.2%	16.7%	13.5%
	No. of Visits	3	4.3%	3.4%	6.0%	6.3%	4.1%	7.9%	9.4%	7.7%	8.0%	5.4%	9.4%	8.1%	8.3%	7.2%	10.6%	6.8%	8.8%	6.9%	8.0%
	No. of Visits	4	2.8%	2.4%	4.2%	2.5%	4.4%	4.7%	3.6%	7.6%	3.0%	3.9%	4.7%	5.7%	3.2%	6.9%	5.4%	4.4%	3.6%	3.8%	4.6%
	No. of Visits	5	1.5%	3.2%	4.7%	1.2%	2.3%	1.6%	2.0%	3.2%	2.6%	2.5%	1.8%	3.4%	1.6%	2.1%	3.3%	2.9%	3.6%	3.6%	3.4%
	No. of Visits	6	1.4%	1.3%	1.5%	1.1%	1.6%	1.6%	0.8%	1.8%	2.4%	2.3%	1.1%	0.8%	1.4%	1.8%	1.7%	2.0%	2.3%	2.7%	3.5%
	No. of Visits	7	1.3%	2.6%	0.9%	1.9%	0.9%	1.3%	1.0%	0.9%	1.3%	2.3%	0.8%	0.5%	1.5%	1.1%	1.4%	1.2%	1.2%	1.2%	2.2%
	No. of Visits	8	1.2%	2.3%	0.4%	1.0%	0.4%	0.3%	0.6%	0.8%	0.8%	0.5%	0.4%	1.3%	0.3%	1.2%	0.6%	1.2%	0.8%	1.2%	0.7%
	No. of Visits	9	0.8%	1.8%	0.2%	0.3%	0.4%	0.8%	0.3%	0.8%	0.9%	1.1%	0.5%	0.0%	0.3%	0.8%	0.4%	0.9%	0.5%	1.2%	0.3%
	No. of Visits	10 or more	8.9%	2.1%	0.7%	1.0%	3.0%	1.9%	4.3%	1.9%	3.0%	3.2%	2.0%	2.1%	2.3%	3.3%	2.7%	3.4%	2.2%	3.1%	3.7%
No. of Visits	2-4	17.4%	15.6%	21.7%	21.7%	24.1%	31.8%	35.9%	33.5%	30.7%	25.9%	32.7%	31.2%	30.6%	36.0%	35.3%	26.8%	30.6%	27.5%	26.1%	
No. of Visits	5+	15.2%	13.2%	8.4%	6.4%	8.5%	7.5%	8.9%	9.4%	11.0%	11.9%	6.6%	8.1%	6.4%	10.8%	9.8%	11.8%	10.5%	13.0%	13.7%	

\*Pike Pa Help was launched on August 21, 2003.

\*\*Value based on actual number of days (132) whereas trend report value was 44 and calculated based on a year (365 days).

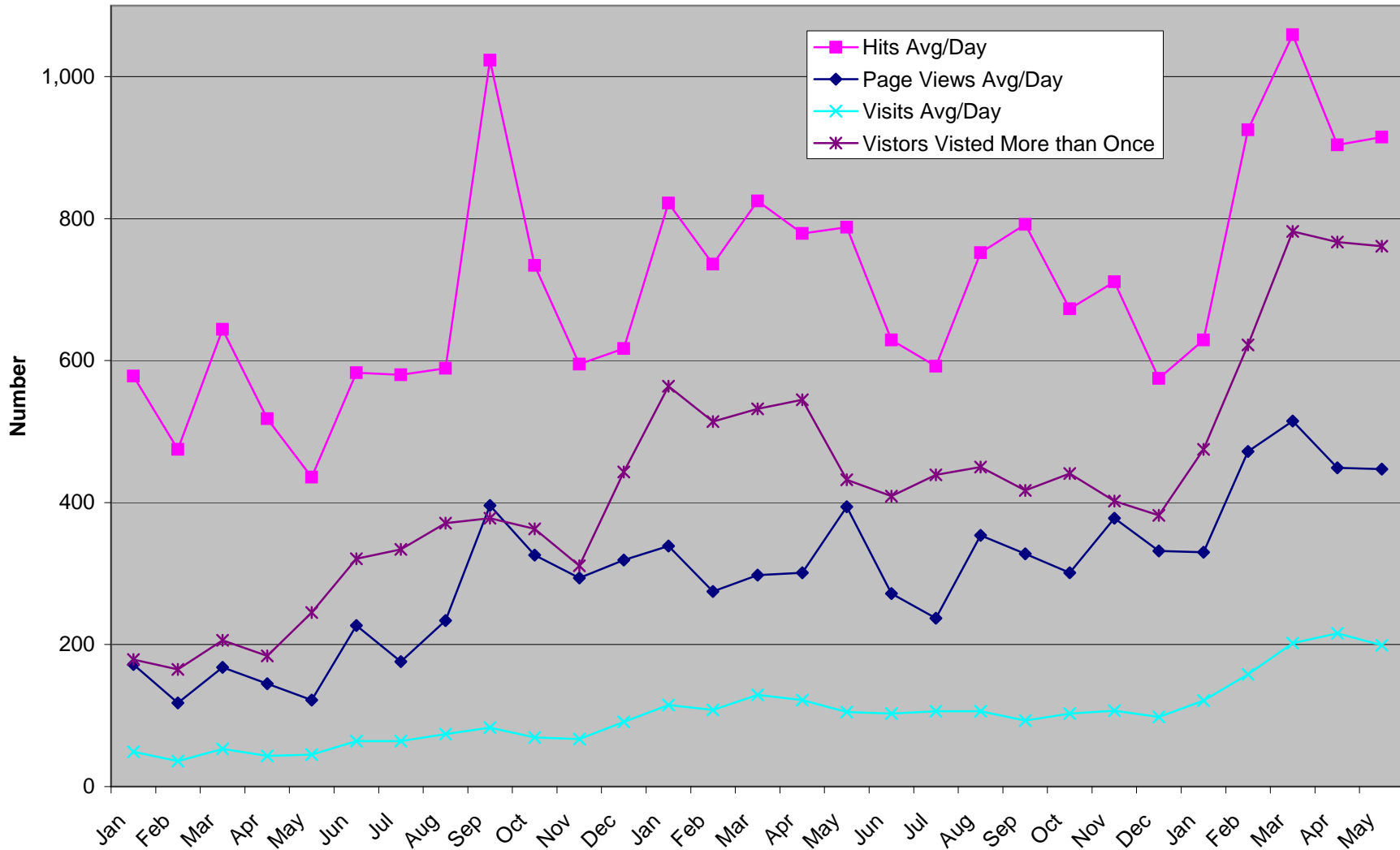
Trends for Pike Pa Help Website

Section	Parameter	2005 Jul	2005 Aug	2005 Sep	2005 Oct	2005 Nov	2005 Dec	2006 Jan	2006 Feb	2006 Mar	2006 Apr	2006 May	%Change Feb-Apr	%Change Mar-Apr	%Change Apr-May	
General	Hits Entire Site	18,354	23,332	23,765	20,884	21,359	17,836	19,522	25,920	32,850	27,147	28,384	5	-17	5	
	Hits Avg/Day	592	752	792	673	711	575	629	925	1059	904	915	-2	-15	1	
	Hits Home Page	354	475	432	438	405	330	368	394	512	340	395	-14	-34	16	
	Page Views Page Views	7,356	10,985	9,869	9,345	11,349	10,321	10,251	13,232	15,989	13,489	13,860	2	-16	3	
	Page Views Avg/Day	237	354	328	301	378	332	330	472	515	449	447	-5	-13	0	
	Page Views Avg/Unique Visitor	6	10	9	9	12	11	8	8	9	7	8	-13	-22	14	
	Page Views Document Views	1,830	2,020	2,518	2,214	2,028	1,821	2,010	2,403	3,247	2,490	2,295	4	-23	-8	
	Visits Visits	3,288	3,290	2,809	3,200	3,235	3,051	3,757	4,436	6,272	6,492	6,198	46	4	-5	
	Visits Avg/Day	106	106	93	103	107	98	121	158	202	216	199	37	7	-8	
	Visits Avg Visit Length	0:12:23	0:10:35	0:12:00	0:12:39	0:15:07	0:08:56	0:11:04	0:07:19	0:08:08	0:09:30	0:09:45	30	17	3	
	Visits Median Visit Length	0:02:46	0:01:50	0:02:19	0:02:51	0:02:37	0:01:39	0:01:54	0:01:58	0:01:15	0:01:38	0:01:41	-17	31	3	
	Visits Visits by Search Engines	150	156	119	144	100	117	126	213	348	262	181	23	-25	-31	
	Visits Visits from Spiders	923	801	733	927	818	1,004	1,384	1,907	2,483	2,753	2,472	44	11	-10	
	Vistors Unique Visitors	1,056	1,073	992	1,038	945	904	1,141	1,545	1,746	1,840	1,730	19	5	-6	
	Vistors Visited Once	617	623	575	597	545	522	666	923	964	1,073	969	16	11	-10	
	Vistors Visited More than Once	439	450	417	441	402	382	475	622	782	767	761	23	-2	-1	
	Activity	Avg/Day Visits Weekdays	109	108	96	107	112	100	125	161	205	221	203	37	8	-8
		Avg Hits/Day Weekdays	691	869	803	779	719	659	680	1,019	1,160	1,064	1,014	4	-8	-5
		Avg Vists/Weekend	199	201	169	187	192	167	200	303	388	413	378	36	6	-8
		Avg Hits/Weekend	768	834	1,524	901	1,380	663	912	1,380	1,541	1,171	1,260	-15	-24	8
Most Active Day		Mon	Tue	Thu	Tue	Tue	Thu	Mon	Wed	Wed	Mon	Tues				
Least Active Day		Sun	Sat	Sun	Sat	Sun	Sun	Sun	Sat	Sat	Sat	Sat				
Most active Date		7/20	8/30	9/10	10/18	11/5	12/28	1/27	2/1	3/22	4/24	5/5				
Hits on Most Active Date		1,270	2,687	2,619	1,395	2,410	1,073	1,301	2,338	1,943	1,988	1,613				
Least Active Date		7/3	8/28	9/4	10/9	11/24	12/25	1/15	2/15	3/11	4/16	5/27				
Hits on Least Active Date		200	186	232	168	176	168	215	352	413	364	284				
Most Active Hour		9:00	15:00	13:00	9:00	8:00	12:00	11:00	12:00	9:00	14:00	13:00				
Least Active Hour		3:00	4:00	5:00	4:00	5:00	4:00	5:00	5:00	2:00	1:00	3:00				
Vistors	No. of Visits 1	58.4%	58.1%	58.0%	57.5%	57.5%	57.7%	58.4%	59.7%	55.2%	58.3%	56.0%	-2	6	-4	
	No. of Visits 2	13.6%	17.7%	14.7%	15.0%	13.7%	18.5%	21.0%	15.1%	18.7%	21.9%	19.2%	45	17	-12	
	No. of Visits 3	6.3%	6.2%	8.2%	8.1%	9.8%	7.5%	8.1%	8.3%	9.0%	6.8%	7.5%	-17	-24	10	
	No. of Visits 4	6.9%	5.5%	5.5%	5.6%	6.5%	5.6%	3.8%	5.8%	4.1%	2.8%	3.9%	-52	-31	37	
	No. of Visits 5	5.0%	2.2%	4.0%	3.5%	3.2%	2.9%	2.4%	4.6%	2.1%	2.0%	3.2%	-58	-8	63	
	No. of Visits 6	2.0%	2.1%	2.2%	2.8%	3.0%	2.1%	1.3%	1.7%	2.1%	1.4%	1.8%	-20	-36	33	
	No. of Visits 7	2.6%	1.5%	2.0%	1.3%	0.7%	0.4%	1.0%	1.0%	0.9%	1.2%	2.0%	16	31	70	
	No. of Visits 8	1.2%	0.9%	1.5%	1.3%	1.2%	1.1%	0.6%	0.5%	1.1%	0.5%	1.6%	7	-58	235	
	No. of Visits 9	1.0%	0.8%	0.6%	0.7%	0.7%	0.4%	0.4%	0.6%	1.0%	0.8%	0.5%	27	-16	-43	
	No. of Visits 10 or more	2.8%	5.0%	3.2%	4.1%	3.8%	3.7%	3.1%	2.7%	5.8%	4.3%	4.3%	62	-26	0	
No. of Visits 2-4	26.9%	29.3%	28.4%	28.7%	29.9%	31.6%	32.9%	29.2%	31.7%	31.6%	30.6%	8	-1	-3		
No. of Visits 5+	14.7%	12.6%	13.6%	13.7%	12.6%	10.6%	8.7%	11.0%	13.0%	10.1%	13.3%	-9	-23	32		

\*Pike Pa Help was launched on August 21, 2003.  
 \*\*Value based on actual number of days (132) whereas

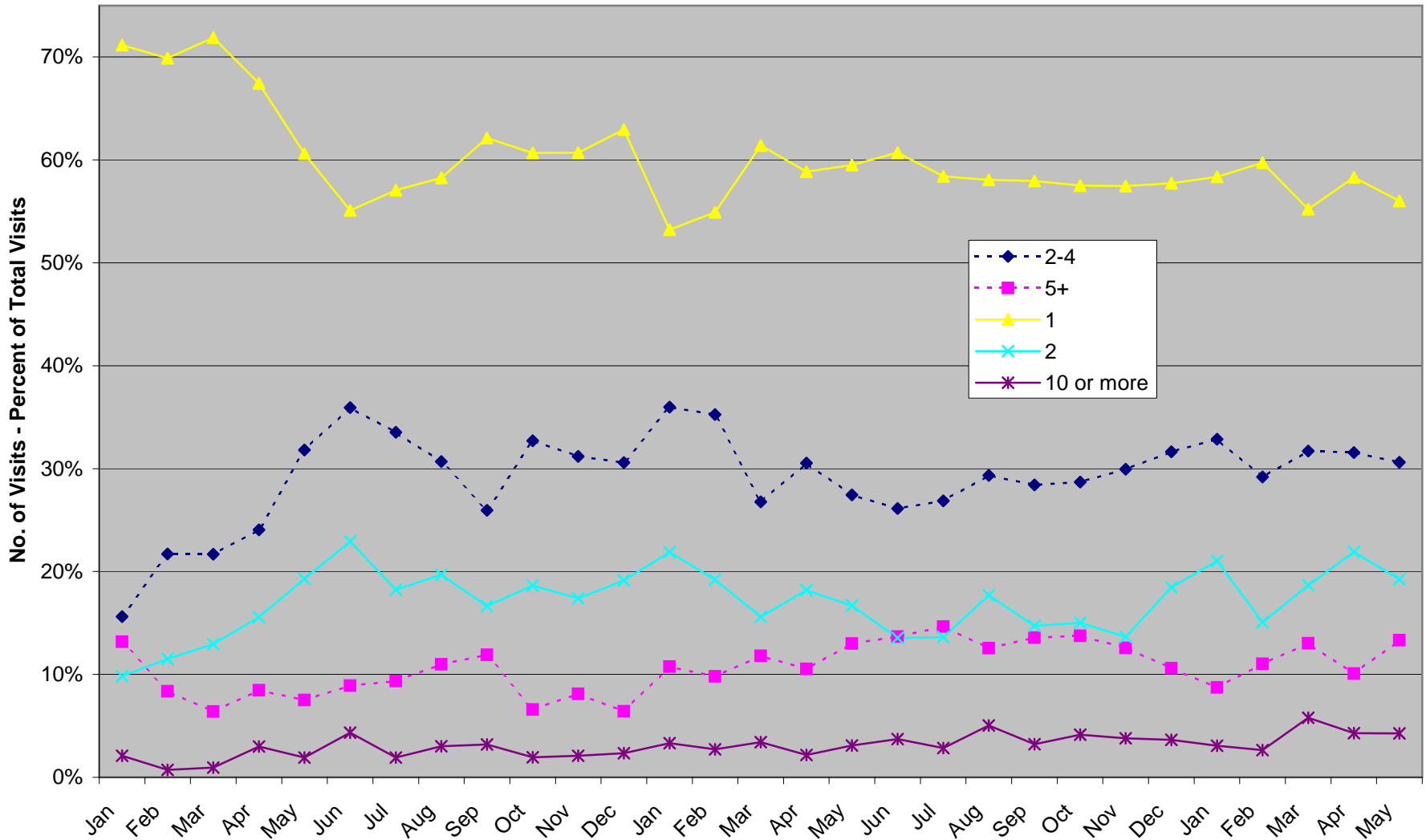
# Trends for Pike Pa Help Website

## General Trends from 2004 - Present



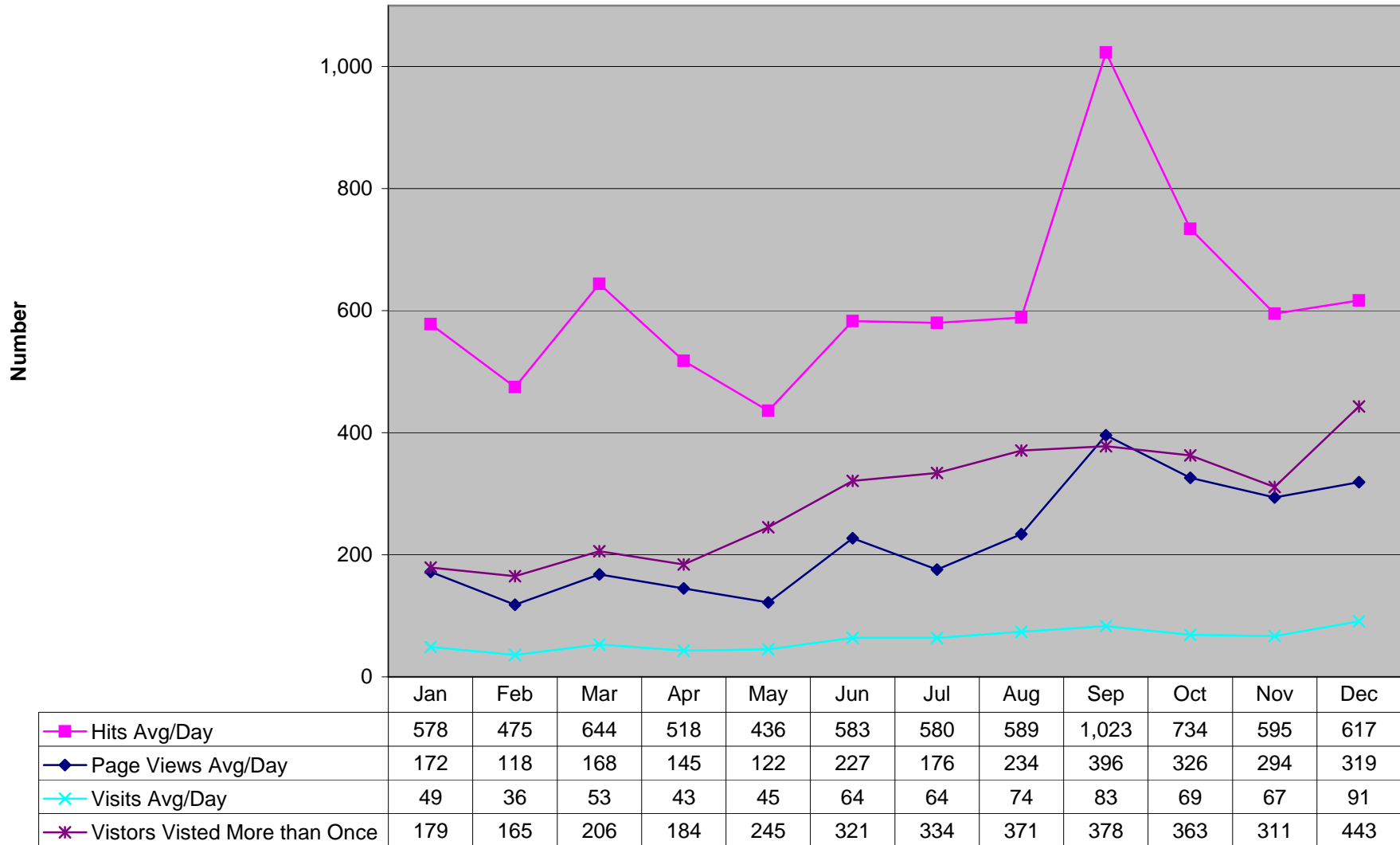
# Trends for Pike Pa Help Website

## Visits from 2004 - Present



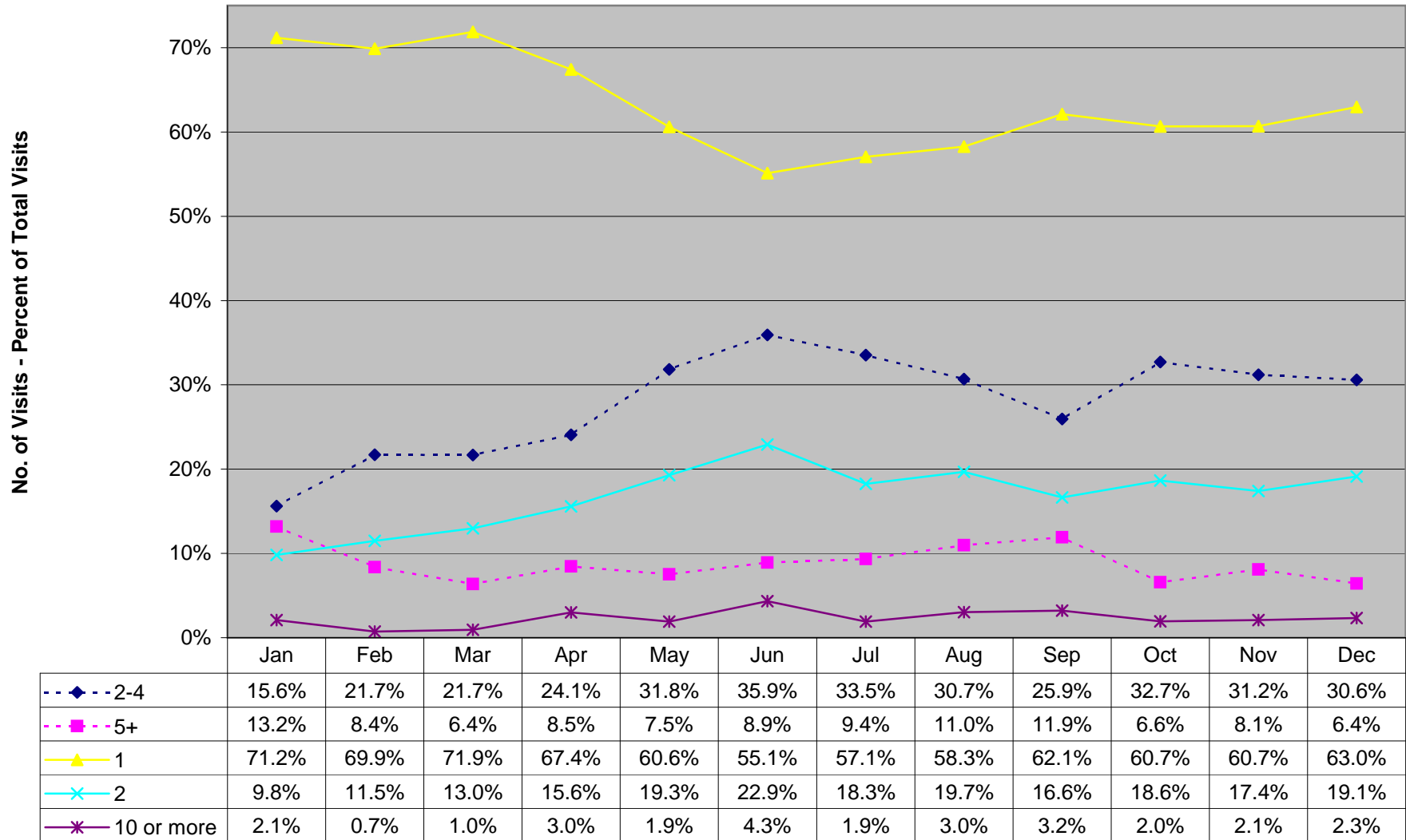
# Trends for Pike Pa Help Website

## General Trends 2004



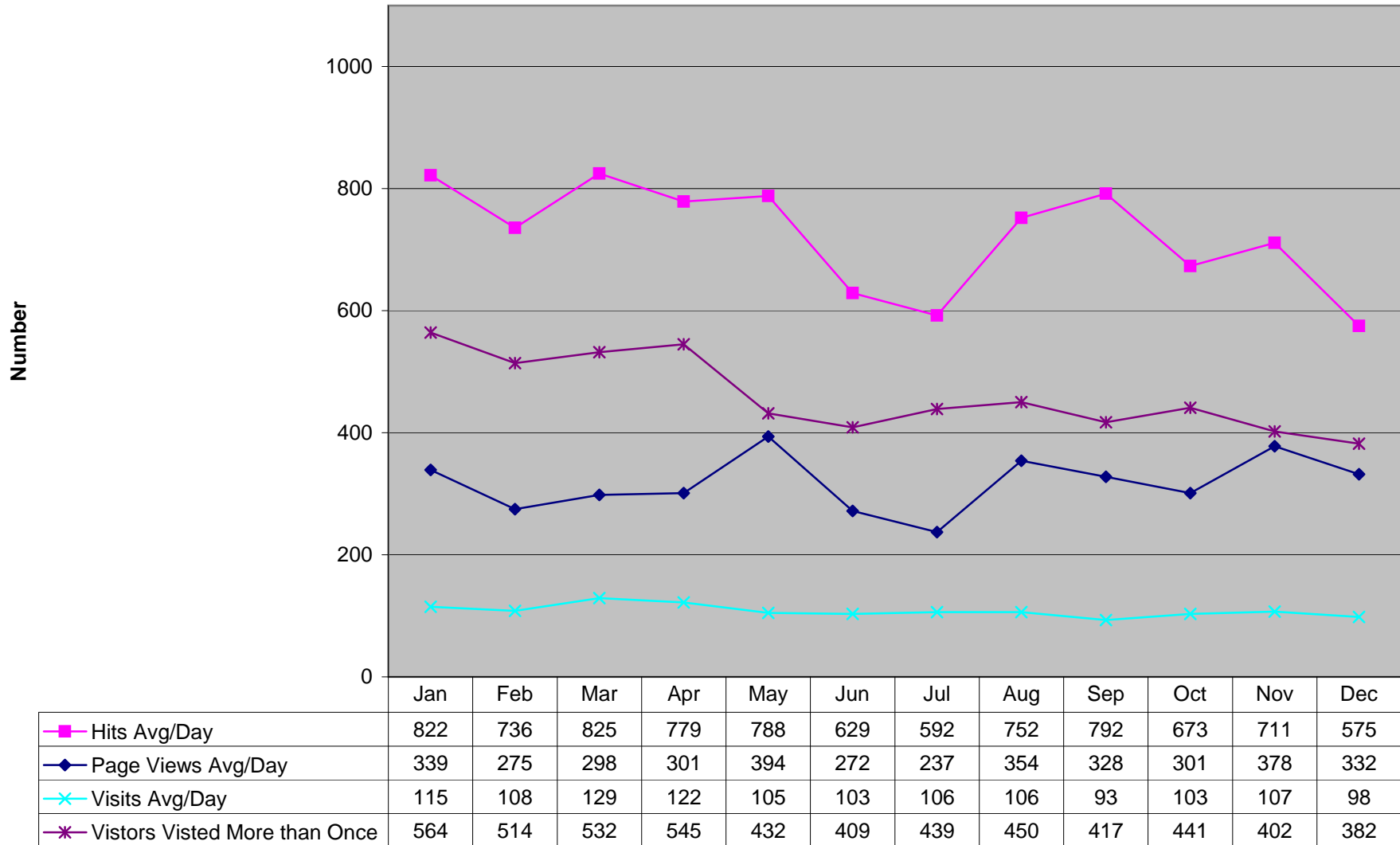
# Trends for Pike Pa Help Website

## Visits for 2004



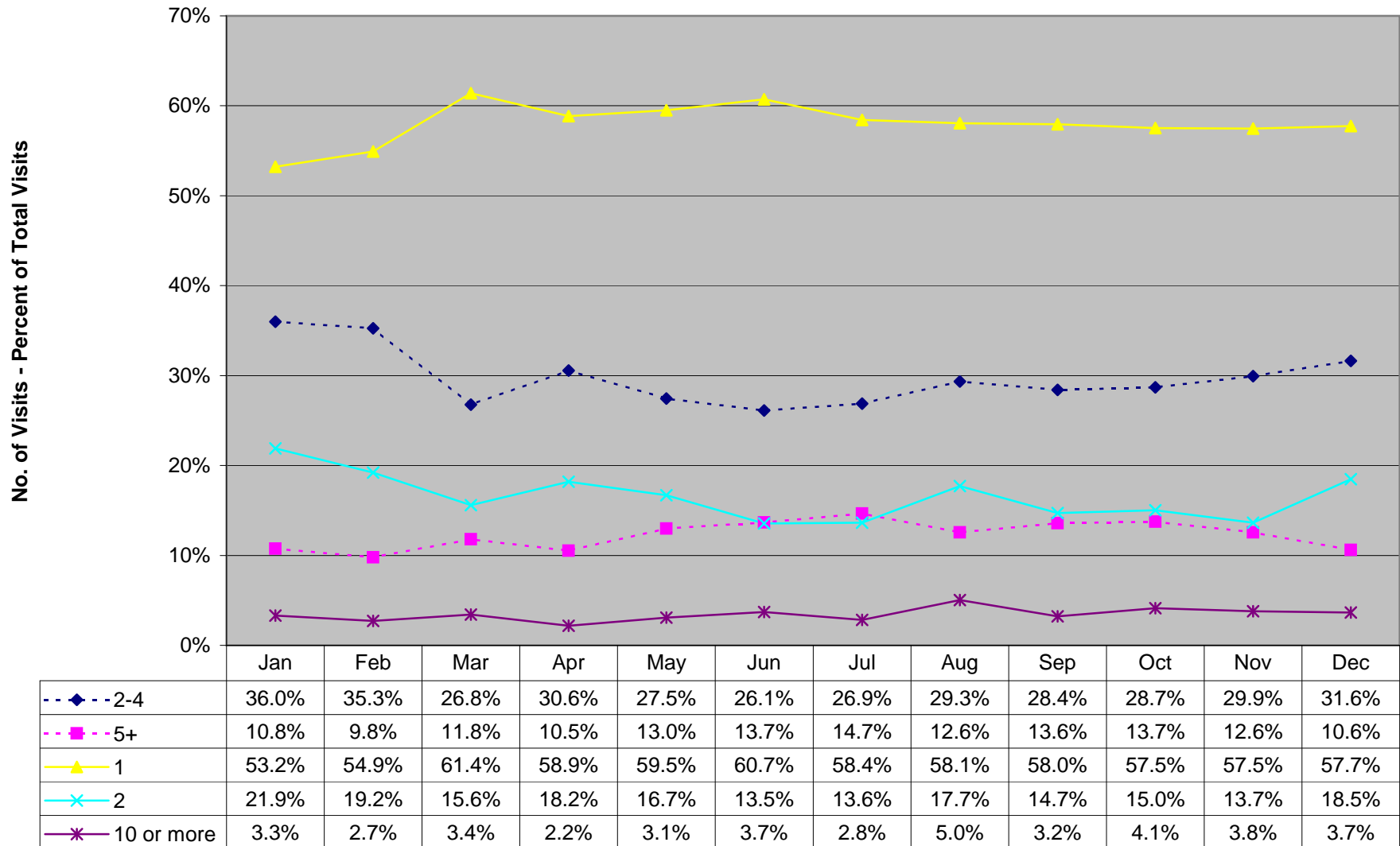
# Trends for Pike Pa Help Website

## General Trends for 2005



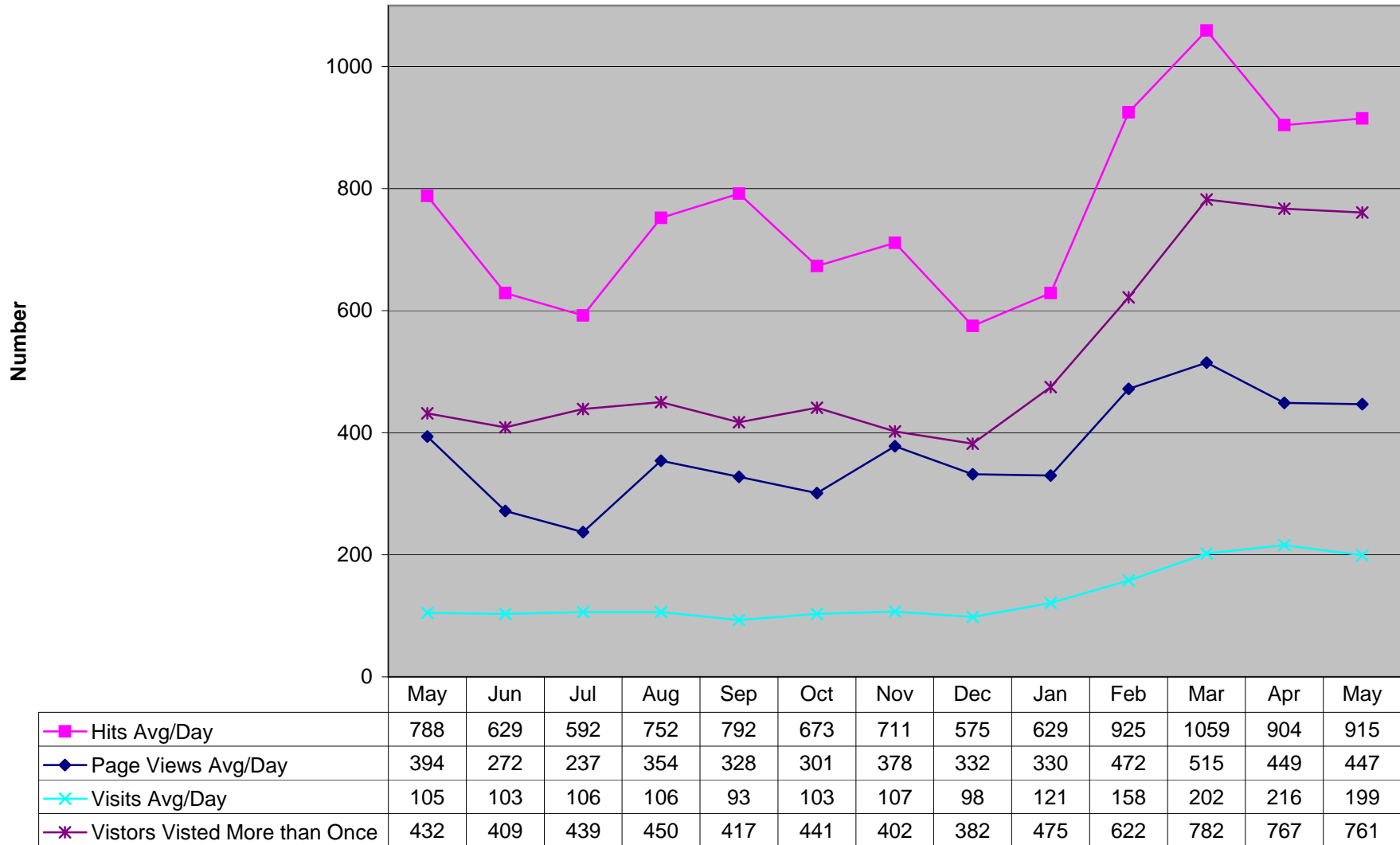
# Trends for Pike Pa Help Website

## Visits for 2005



# Trends for Pike Pa Help Website

## General Trends for Past Year (2005 to 2006)



# Trends for Pike Pa Help Website

## Visits for Past Year (2005 to 2006)

